

### Product Feature

- Easy to install and maintenance.
- Increase durability by using sunscreen: UV class 8 ( PA +++ )
- Use a buoy ( floating ) suitable for Migration testing in Drinking water standard.
- Intellectual property rights including patent and design.
- Thickness of PV : 5 mm or more.

### Floating Structure Specification

Part name	Size	Weight	Material	Buoyancy
Main block	2,300*1760*438	25kg	MDPE	320kg
Passage block	2,300*650*220	15kg	MDPE	175kg
Tray block	800*1760*220	15kg	MDPE	180kg
load block A	800*1760*220	12kg	MDPE	175kg
load block B	2,300*1760*220	30kg	MDPE	450kg
load block C	2,300*1760*220	30kg	MDPE	450kg
load block D	650*800*220	12kg	MDPE	57kg
Connect pin	220*50	0.2kg	MDPE	-
Bracket A	80*50*5	0.1kg	SUS	-
Bracket B	120*50*50	0.1kg	SUS	-

### Real site Installation



### 5 Step Assembly and installation



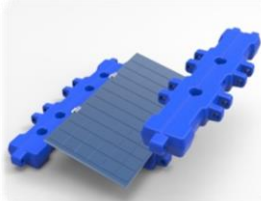
1. Main block



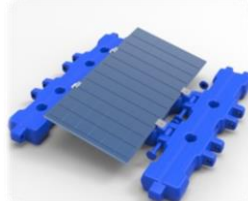
2. PV Module on Main Float



3. Fix Bracket and bolts



4. Secondary Float



5. Connection Pin



Completed

Supplier: FT ENERGY.BRO-01.Solar Cell.Rev1.00I2018